



PROVINCIAL DEPARTMENT OF EDUCATION - NORTH WESTERN PROVINCE

Second Term Test 2018

Grade 8

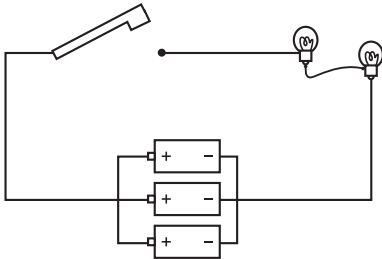
SCIENCE

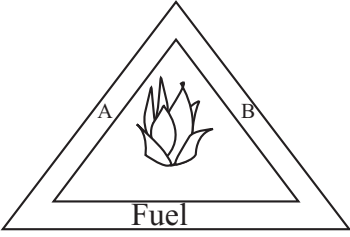
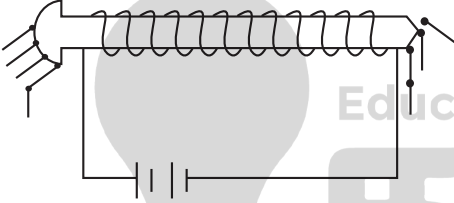

Time : 2 hours

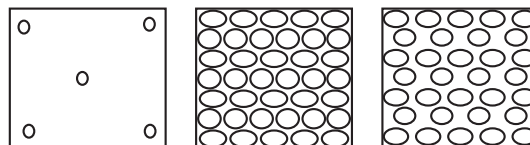
Name / Index No.

Part I

- Select most appropriate answer for all questions.

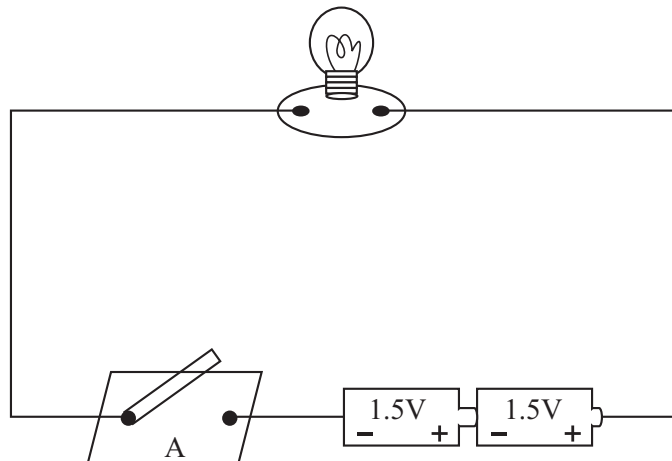
01. Select the answer which contains only vertebrates,
(1) Man, Bat, Snail (2) Lizard, Cobra, Butterfly
(3) Crab, Dolphin, Bat (4) Lizard, Frog, Salamander
02. The adaptation shown by the plant leaf to perform the photosynthesis effectively is,
(1) The division of leaf into leaflets. (2) Having broad and thin leaves.
(3) Having fleshy leaves (4) The deposition of food in leaves
03. The elements in copper sulphate are,
(1) Copper, Sulphur, Oxygen (2) Sulphur, Oxygen, Iron
(3) Copper, Iron, Oxygen (4) Sulphur, Iron, Oxygen
04. Select the correct statement,
(1) Violin is a musical instrument which produced sound by vibrating membranes.
(2) All musical instruments are sources of sound.
(3) Pitch of the rabana can be reduced by heating.
(4) Speed of sound is higher than the speed of light.
05. Which of the following shows highest brittleness,
(1) Copper (2) Iron (3) Sulphur (4) Magnesium
06. Area that the magnetic power is spread around a magnet is known as,
(1) Magnetic poles (2) Magnetic flux lines
(3) Magnetic field (4) Magnetic property of magnet
07.  The way of connecting bulbs and cells in the above circuit is,
(1) Bulbs are in parallel, cells are in series.
(2) Bulbs and cells are in parallel.
(3) Cells are in parallel, bulbs are in series.
(4) Cells and bulbs are in series.
08. The unit measuring the resistance is,
(1) Ampere (2) Volt (3) Watt (4) Ohms
09. Observations that can be seen when burning a Magnesium strip are,
(1) White coloured flame and Blue coloured power.
(2) White bright flame and White coloured power.
(3) Yellow bright flame and White coloured power.
(4) White bright flame and Yellow coloured power.

10. Which of the following shows a physical change and a chemical change respectively,
 (1) Melting of ice, Dissolving salt crystals in water.
 (2) Burning of fire wood, freezing coconut oils in cold days.
 (3) Heating of lead nitrate, burning of a paper.
 (4) Melting of wax, burning of a magnesium strip.
11.  Diagram of a fire triangle is given below. Which of the following represents A and B?
 (1) Heat and Oxygen
 (2) Heat and Carbon dioxide
 (3) Light and Oxygen
 (4) Light and Carbon dioxide
12. Which metal is applied on iron in the process of galvanization?
 (1) Zinc (2) Magnesium (3) Copper (4) Mercury
13. Which of the following contains only excretory products?
 (1) Sweat, faeces, Urine (2) Carbon dioxide, Urine, faeces
 (3) Tears, Water, Carbon dioxide (4) Carbon dioxide, Urine, Sweat
14. An electro magnet is given below. The method suitable to increase the power of the magnet is,

 (1) Increasing the number of cells and length of the wire.
 (2) Increasing the number of cells and reducing the length of the wire.
 (3) Reducing the number of cells and reducing the length of the wire.
 (4) Reducing the number of cells and increasing the length of the wire.
15.  The symbol given below indicates,
 (1) A Light depending resistor. (2) A Light emitting diode.
 (3) A rectifying diode. (4) A variable resistor.
16. The equipment used to control the electric current of a circuit made in the school is,
 (1) Volt meter (2) Ammeter (3) Rheostat (4) Galvanometer
17. Which effect of electricity is shown by emitting gas from electrodes in the simple cell?
 (1) Chemical effect (2) Heat effect (3) Magnetic effect (4) Optical effect
18. The group of micro - organisms which causes the disease rabies is,
 (1) Virus (2) Bacteria (3) Fungus (4) Protozoa
19. Which of the following is not a feature of a plant with fibrous root system?
 (1) Presence of thin, long leaves. (2) Presence of one seed leaf in the seed
 (3) Branched stem (4) Presence of parallel leaf venation
20. Particle arrangement of three stages of matter is given below. Which of the following correctly indicates these three stages?
 (1) Solid, liquid and gas
 (2) Solid, gas and gas
 (3) Gas, liquid and solid
 (4) Gas, solid and liquid



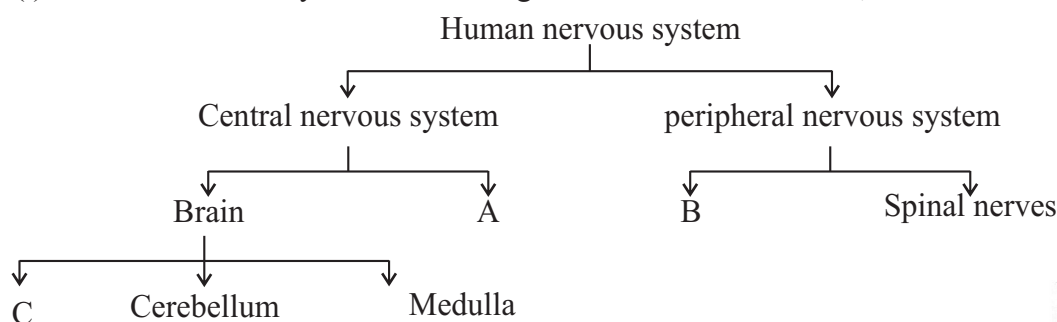
- Answer only five questions.

01. A circuit arranged by a group of students in grade 8 is given below. Answer the questions based on it.

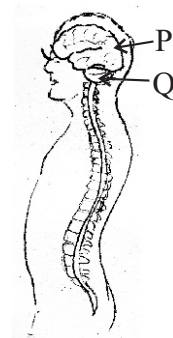


- What is the voltage of a dry cell used in above circuit? (01m.)
- Name the accessory A. (01m.)
- Write 2 observations that can be seen when a ceratin change is done in the accesory A.(02m.)
- Name two effects of electricity that can be identified by using above observations made in (iii). (02m.)
- Name the way of connecting two dry cells in the above circuit. (01m.)
- Write two protective strategies that should be followed when using electric equipments domestically. (02m.)

02. (i) Human nervous system can be categorized as follows. Name A, B and C in the chart. (03m.)

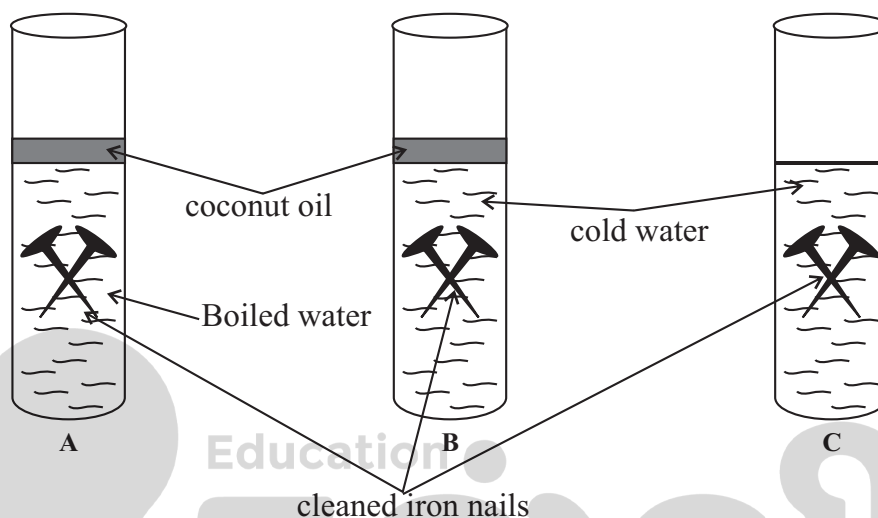


- Diagram of a central nervous system is given above. Name main parts P and Q of it. (02m.)



- (iii) Which name is used for the bone that protects the brain? (01m.)
- (iv) As soon as an ember was trodden, the leg was taken away. Which part of the central nervous system connects here? (01m.)
- (v) Write the effector connects to the above action mentioned in (iv). (01m.)
- (vi) Write one protective measure which should be followed by us for the protection of nervous system. (01m.)

03. A group of students did the activity given below to investigate the factors essential for rusting of iron.

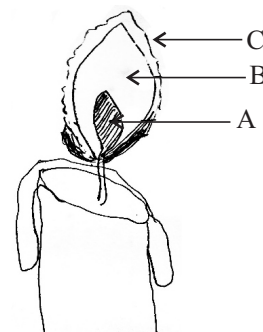


The setups arranged had been kept for a few days.

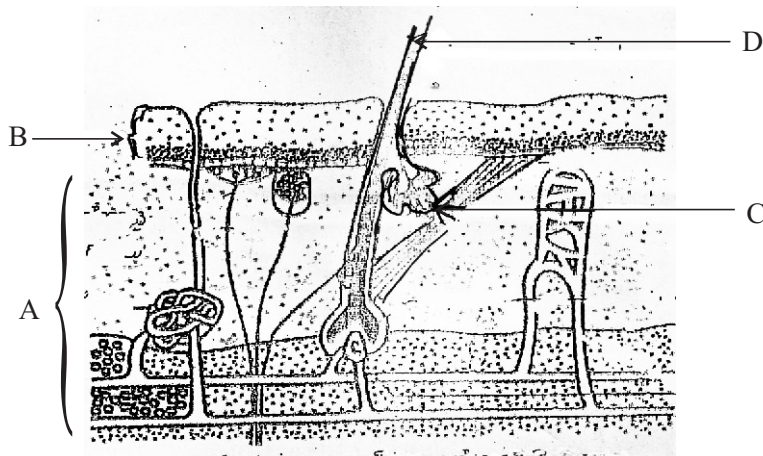
- (i) Write the observations that can be seen in test tubes A, B and C. (03m.)
- (ii) What is the purpose of putting an oil layer to test tubes A and B? (01m.)
- (iii) Out of the observations obtained, it can be concluded that a certain factor is essential for rusting. Name that factor. (01m.)
- (iv) What is the other factor essential for rusting except the factor mentioned in above (iii)? (01m.)
- (v) Name a substance that increases the rate of rusting. (01m.)
- (vi) Write 2 devices that can be used for the protection of iron from rusting. (02m.)

04. The diagram shows the zones of the candle flame.

- (i) Name A, B and C. (03m.)
- (ii) Write the products formed during complete combustion of wax. (02m.)
- (iii) Write the chemicals which can be used to identify the each of the above products mentioned in above (ii) respectively. (02m.)
- (iv) Write 2 differences between complete combustion and incomplete combustion. (02m.)



05. The largest organ in the human body is skin. A structure of a human skin is shown below,



- (i) Name A, B, C and D parts. (02m.)
- (ii) In which part, the pigment melanin is present? (01m.)
- (iii) Write one use of the pigment mentioned above in (ii). (01m.)
- (iv) Skin acts as an excretory organ. Name the excretory product that releases by the skin. (01m.)
- (v) Name one substance available in the above excretory product mentioned in (iv). (01m.)
- (vi) Write two functions of the skin. (02m.)
- (vii) Write one strategy that can be followed to maintain a healthy skin. (01m.)

06. You have been supplied following substances and a powerful bar magnet.

Pins, a glass lid, an iron nail, an eraser, a coin, a piece of paper,
a plastic cover, a file clip

- (i) Present as a table, the substances that attract toward the magnet and did not attract towards the magnet separately. (02m.)
- (ii) Write two instances of using permanent magnets. (02m.)
- (iii) Which name is used for the regions where magnetic power of a magnet is high? (01m.)
- (iv) If you have been supplied two identical magnets, Draw the way of storing them. (Include other substances if necessary) (02m.)
- (v) Which equipment used for the identification of the direction of magnetic field? (01m.)
- (vi) If you have to make a permanent magnet in the lab, write the way of doing it shortly. (01m.)

Answer Sheet - Part I

01. (4) 02. (2) 03. (1) 04. (2) 05. (3) 06. (3) 07. (3) 08. (4) 09. (2) 10. (4)
 11. (1) 12. (1) 13. (4) 14. (2) 15. (2) 16. (3) 17. (1) 18. (1) 19. (3) 20. (4)

Part II

01. (i) 1.5 V (01m.) (ii) Switch (01m.)
 (iii) Lightning up of bulb (01m.) Heating of wires (01m.)
 (iv) Lightning up of bulb - Effect of light (01m.) Heating of wires - Effect of heat (01m.)
 (v) Connected in Series (01m.)
 (vi) Should not touch with the wet hand.
 Use a rubber mat to stand when using electric appliances. (two such answers) - (02m.) (total marks 09)

02. (i) A - Spinal cord B - Cranial nerves C - Cerebrum (03m.)
 (ii) P - Cerebrum Q - Cerebellum (02m.) (iii) Skull (01m.)
 (iv) Spinal cord (01m.) (v) Muscles of the leg (01m.)
 (vi) Any correct answer (01m.) (total marks 09)

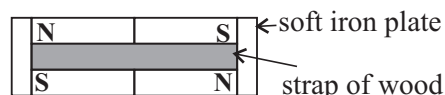
03. (i) The iron nails in test tube A has not rusted (01m.) The iron nails in test tube B has rusted (01m.)
 The iron nails in test tube C has rusted (01m.)
 (ii) To avoid dissolving oxygen gas (air) in the atmosphere. (01m.)
 (iii) Oxygen / Air (01m.) (iv) Water (01m.)
 (v) Acids / salts (01m.)
 (vi) Applying grease, Applying paints (such two answers) (02m.) (total marks 09)

04. (i) A - Non luminous zone (01m.) B - Luminous zone (01m.) C - non - luminous (01m.)
 (ii) CO₂ - (01m.) H₂O - (01m.)
 (iii) CO₂ - Lime water (01m.) H₂O - Anhydrous copper sulphate or Cobolt chloride (01m.)

- (iv)
- | Complete combustion | Incomplete combustion |
|----------------------|----------------------------|
| High energy produced | Low energy produced (01m.) |
| No soot produced | Soot produced (01m.) |
- (total marks 09)

05. (i) A - Dermis B - Epidermis C - Sebaceous glands D - Hair stem (02m.)
 (ii) In epidermis (01m.) (iii) Protect skin from the sun's ultraviolet rays (01m.)
 (iv) Sweat (01m.) (v) Urea, Uric acid, ammonium salts, water (01m.)
 (vi) ♦ Acting as a protective cover ♦ Regulation of body temperature
 ♦ Acting as a sensory organs ♦ Synthesis of vitamin D
 ♦ Excretion (02m.)
 (vii) ♦ Taking nutritive diet ♦ Bathing everyday
 ♦ Protection of skin from sun (01m.) (total marks 09)

06. (i) Materials attract to the magnets - pins, Iron nail, Coin, File clip
 Materials do not attract to magnets - Glass lid, Erases, Piece of paper, Plastic lid (02m.)
 (ii) compass, pencil boxes - such two answers (02m.)
 (iii) Poles of magnet (01m.) (iv) (02m.)
 (v) compass (01m.)
 (vi) contact method or electrical method. writing the
 contact method or electrical method. (01m.)



(total marks 09)

May

ONLINE CLASSES - 2025

NEW ADMISSIONS

2ம் தவணை வகுப்புகள்

தரம் 6 முதல் O/L வரை

அனைத்து பாடங்களும் ஒரே
கல்வி நிறுவனத்தின் கீழ் ...



இலங்கையின் எப்பாகத்திலிருந்தும்
ZOOM APP மூலம் எமது வகுப்புகளில்
இணைந்து கொள்ள முடியும்.



JOIN NOW

WWW.KALVI.LK

075 287 1457