



Provincial Educational Department
Northern Province
Second Term Examination - 2017
Geography



Grade - 11

61 T I

Three Hours

Index No:.....

Geography - I

- ❖ This paper comprises 40 questions.
- ❖ Answer all questions on this paper itself according to the instructions given to each questions.

★ Select the correct answer given in the bracket and write down on the dotted line for the questions 1 to 10.

01. is the layer that includes the Earth's crust and the upper mantle.
(Atmosphere, Lithosphere, Hydrosphere)
02. The upper limit of the troposphere the.....
(Tropopause, Gutenberg, Layman)
03. The deepest places in ocean is
(Continental Slope, Continental bed, Ocean Trench)
04. ocean is connected with ocean.
(Mediterranean, Arabian, Aral)
05. Region located in between Tropic of Cancer and Arctic circle
(Temperate, Tropical, Polar)
06. Paddy cultivated in river valleys in North America.
(Murray darling, Po, Sacramento)
07. The Coconut Research Institutes located at
(Rinfield, Thalawakala, Embilipitiya)
08. Action has been taken to expand rubber cultivation in the districts of.
(Anuradhapura, Mullaitivu, Puttalam)
09. Dairy Cattle centre has been set up to exchange lactating cows..
(Tangottuwa, Dediawewa, Meevanapalana)
10. The first formal population census was conducted in Sri Lanka in
(1800, 1850, 1871)

★ Draw the circle around T when the statement is correct and if it is wrong draw the circle around F for the questions from 11 to 15

- | | |
|---|-------|
| 11. Zealandia to be recognized as the world's eighth continent | T / F |
| 12. Edna volcano found in Sicily Island. | T / F |
| 13. China has made the greatest contribution among steel producing countries. | T / F |
| 14. The contour lines extend close to each other is shown a steep slope. | T / F |
| 15. Sri Lanka is a multi cultural country | T / F |

★ Write the correct answer on the dotted line when connect the column A with B form the questions 16 to 20.

16. The important layers of atmosphere is shown in column A and their upper boundary is shown in column B, The correct answer when join the column A with B.

A		B	
1. Troposphere		A. Tropopause	
2. Stratosphere		B. Stratopause.	
3. Mesosphere		C. Mesopause.	
		D. Thermopause	
1. D, A, B	2. A, B, C	3. D, C, B	4. A, D, B (.....)

17. The island in the world is shown in column A and their continent is shown in column B, The correct answer when join the column A with B.

A		B	
1. Borneo		A. Africa	
2. Madagascar		B. Australia	
3. Papua newguinea		C. Asia	
		D. South America	
1. C, A, D	2. C, A, B	3. A, C, D	4. D, A, B (.....)

18. The sources of originating river is shown in column A and the river originated from them is shown in column B, The correct answer when join the column A with B.

A		B	
1. Lake		A. Mahaweli	
2. Spring		B. Nile River	
3. Mountain spring		C. Thames River	
		D. Rhyne River	
1. A,B,C	2. B,A,C	3. B, C, A	4. B, C, D (.....)

19. The continents are shown in column A and the lakes are found on them in column B, The correct answer when join the column A with B..

A		B	
1. Asia		A. Lakota Lake	
2. Australia		B. Baikal Lake	
3. Europe		C. Ayr Lake	
		D. Lake Victoriya	
1. D, C, B	2. B, D, C	3. A, D, B	4. B, C, A (.....)

20. The rivers are shown in column A and the tanks found on them in column B, The correct answer when join the column A with B.

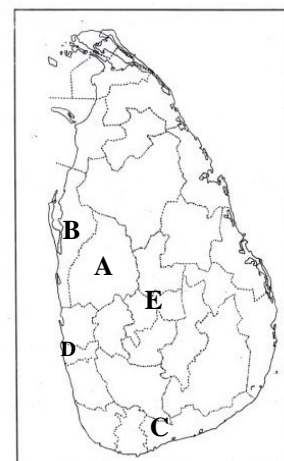
A		B	
1. Malwathu Oya		A. Senanayake Samuthiram	
2. Gal Oya		B. Nuwara Wewa	
3. Kala Oya		C. Kurulu Wewa	
		D. Kala Wewa	
1. D, C, A	2. B, A, D	3. C, A, B	4. D, A, C (.....)

★ Fill in the blanks with suitable words for the questions 21 to 25.

21. landscape forms when the river fall in to the ocean.
22. rocks are form when the Igneous rocks metamorphosed.
23. Mineral oil refinery center located in In Sri Lanka.
24. The tectonic plates move as a result of the which are active in the mantle.
25. vegetation can be seen in coastal areas.

★ Answer the question 26 and 27 using the given world map.

26. Letter denotes the highly populated district.
27. letter denotes the district where the thermal power plant located in Nuraicholai.

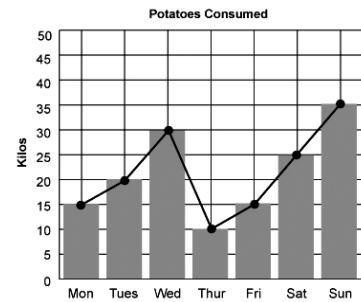


★ Answer the question 28 to 30 using the given graph.

28. The largest amount of potato purchased in day.

29. The lowest amount of potato purchased in day.

30. The graph is called as.....and it shoes the purchase of potato.



★ Select the correct or more suitable answer for the questions from 31 to 40

31. The soil layer where parent rock had completely weathered.

1. Horizon C 2. Horizon B 3. Horizon A 4. Horizon O

32. Water is added to the environment due to evaporation and transpiration from plants and animals.

1. Atmospheric water 2. Surface water 3. Soil water 4. Oceanic water

33. One of the strict natural reserves

1. Vasmamuwa 2. Ritigala 3. Weeravilla 4. Giritala

34. The place in northern region where Wind power resource center located.

1. Mirusuwil 2. Kodikamam 3. Palai 4. Iyakachchi

★ Answer the question 35 and 36 using the given information.

- A. Biomass
B. Population growth
C. Reduction of rainfall
D. High Temperature
E. Drought

35. Increase of one factor causes to accelerate the destruction of other factor.

1. B,A 2. B,C 3. D,B 4. B,E

36. Reduction of one factor causes for the conformation of other factors

1. A,B 2. B,C 3. C,E 4. C,B

37. The index used to measure development that include the life expectancy at birth Literacy and purchasing power.

1. Physical Quality of Life Index 2. Human Poverty Index
3. Per capita income 4. Human Development Index

38. The sedimentary rock found in Jaffna peninsula and North western coast line of Sri Lanka.

1. Marble 2. Dolomite
3. Miocene limestone 4. Andigamadeposite

39. The mineral deposited in mirigama and Balangoda

1. Rutile 2. Zircon 3. Ilmenite 4. Silica

40. The place where section of garbage mountain collapse in Sri Lanka in 2017.

1. Arannagala 2. Thangottuwa 3. Hallthumulla 4. Meethotamulla



Provincial Educational Department
Northern Province
Second Term Examination - 2017
Geography



Grade - 11

61 T I

Geography - II

- ★ This question paper comprises Part I and II
- ★ Part I is compulsory and answer part A, B and C
- ★ Answer four questions from the Part II
- ★ Altogether answer five questions.

Part I

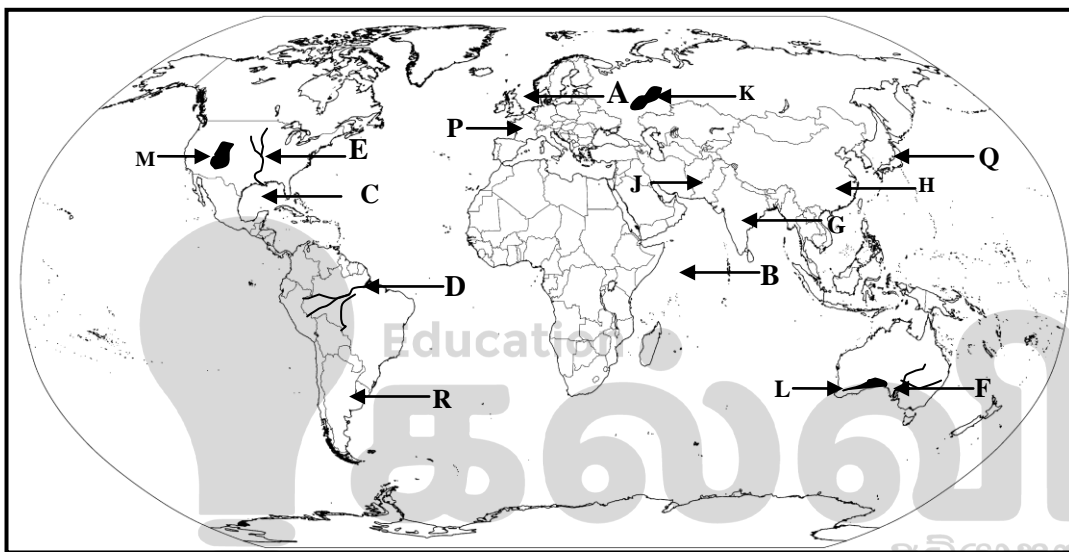
01) (A) Answer the following questions using the given 1: 50000 map. Select the correct answer given in the bracket and write down for the questions 1 to 10

- (i) The feature shown by Number 01
(**outcrop / Forest reserve / Sand dune**) (1 Marks)
- (ii) The crop cultivation carried out in shown by no 02
(**Home garden/ Paddy / Chena cultivation**) (1 Marks)
- (iii) Which is shown in by no.03
(**River / Irrigation Cannel /Bund**) (1 Marks)
- (iv) The type of road marked as no.04
(**Main road / Other road / Minor road**) (1 Marks)
- (v) The service center shown by letter A (1 Marks)
- (vi) The crop cultivation marked as B (1 Marks)
- (vii) The letter D denotes. (1 Marks)
- (viii) Three statements are given for the with regarding to the map area. Read the statement and write T when it is correct or write F when it is wrong on the given answer sheet.
 - (a). The map area given you is a less developed region (1 Marks)
 - (b). The main source of supplying water in the region is Tank (1 Marks)
 - (c). The distribution of roads are high in this region (1 Marks)

(B) Use the given world map to answer for the questions and use the column to answer the questions.

- (i) The letter shows the Arabian sea among the letters denoted A, B and C.
- (ii) The letter shows the Amazon river among the letters denoted D, E and F.
- (iii) The letter shows the India among the paddy cultivated countries among the letters denoted G, H and J.
- (iv) The letter shows the Nullabar plain among the letters denoted K, L and M.
- (v) The letter shows the Argentina that the leading countries in automobile industry among the letters denoted P, Q and R.

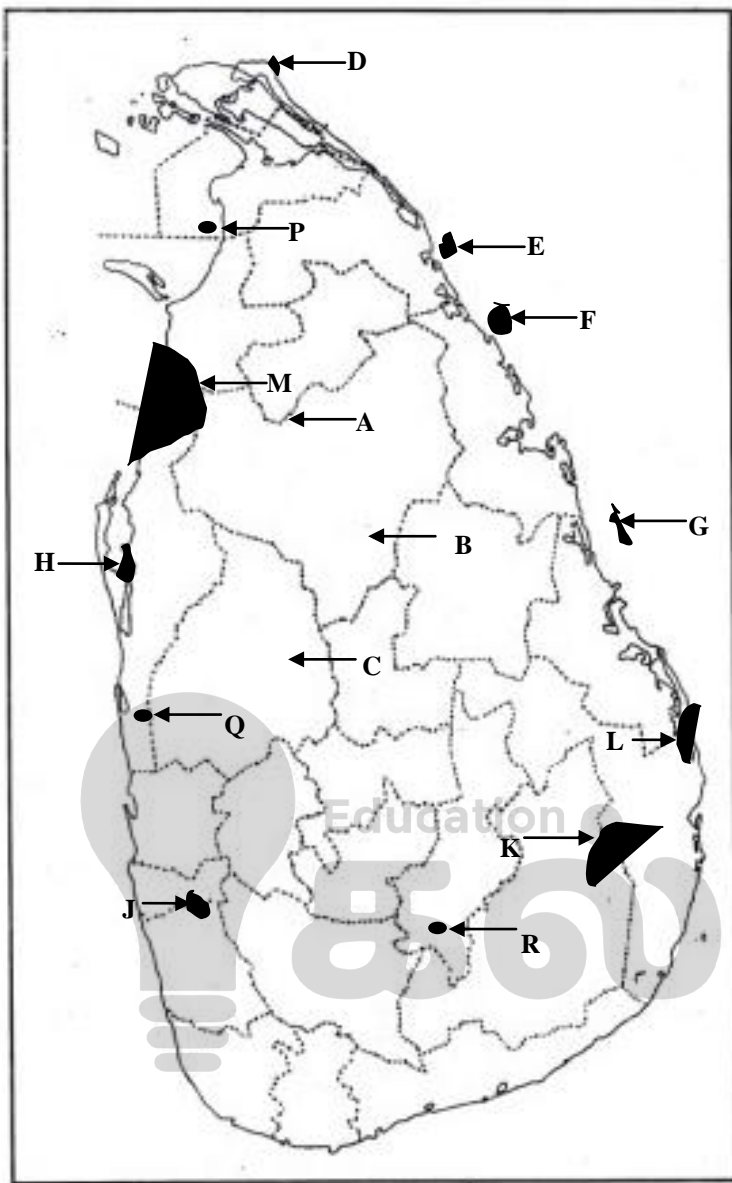
(5 Marks)



- (i)
- (ii)
- (iii)
- (iv)
- (v)

(C) Use the given world map to answer for the questions and use the column to answer the questions.

- (i) The letter shows the Matale district where the minor export research center located among the letters denoted A, B and C.
- (ii) The letter shows the Vallipuram where mineral sand deposited found among the letters denoted D, E and F.
- (iii) The letter shows the Hikkaduwa where Corel reef found among the letters denoted A, B and C.
- (iv) The letter shows the Kumana Natural sanctuaries found among the letters denoted A, B and C.
- (v) The letter shows the Dikowat fishery harbor located among the letters denoted A, B and C.

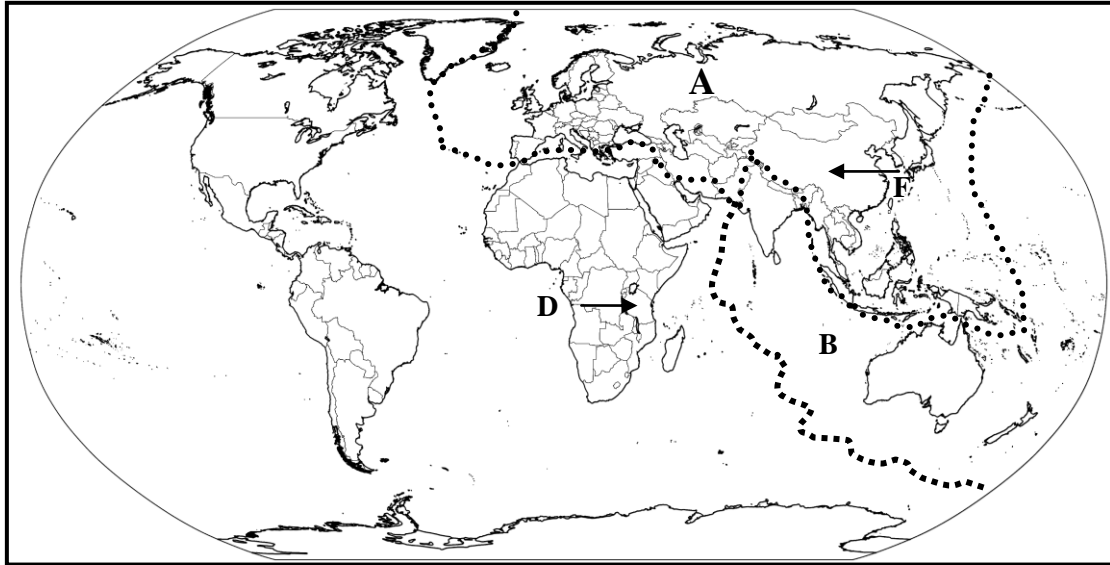


i	
ii	
iii	
iv	
v	

Part - II

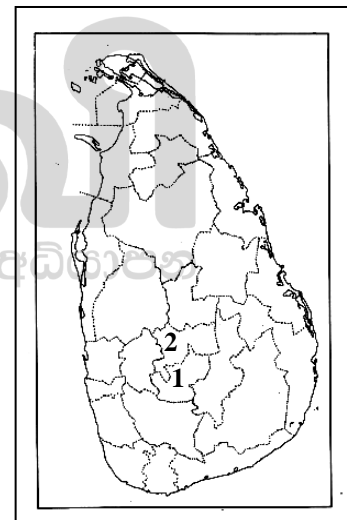
- 02) (i) **Name** the earth system's four sub systems. (2 Marks)
- (ii) Give the importance of Ozone layer. (3 Marks)
- (iii) Mention three human activities that causes for environmental pollution and explain them (5 Marks)

★ Answer the 3rd and 4th questions using the given world map.

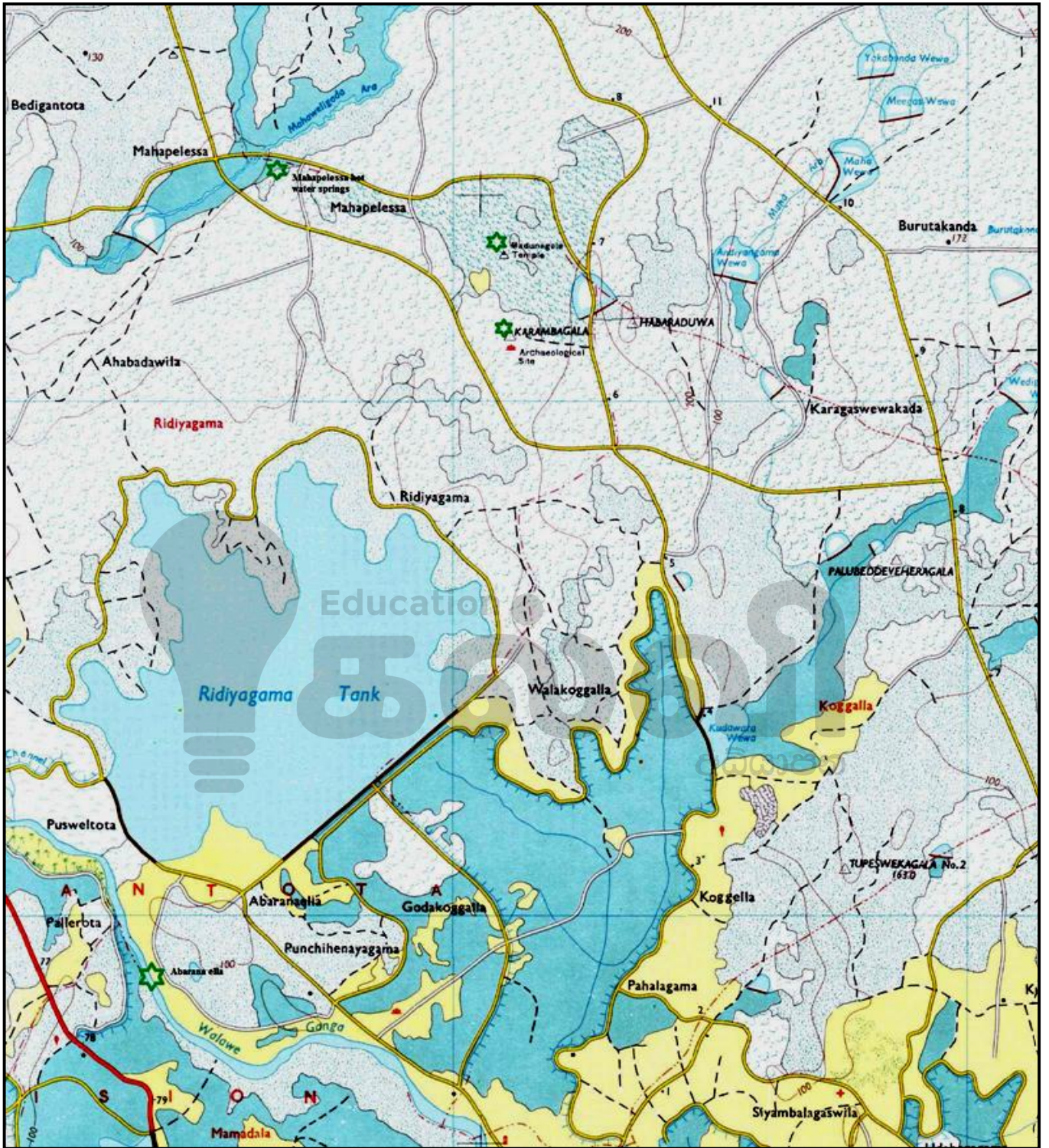


- 03) (i) In the given world map
 a) Name the plate denoted by the letter A
 b) Name the plate denoted by the letter B (2 Marks)
 (ii) Give 3 natural hazards occurs due to the movement of above plates.
 (iii) Give 3 features of tropical climate and explain them.

- 04) (i) Name the two countries that are manufacturing tea marked as D and F
 (ii) Give 3 salient features of Tea cultivation.
 (iii) (a) Name the districts marked as 1 and 2 where tea cultivated in Sri Lanka.
 (b) Mention 3 factors that are favorable for tea cultivation in Sri Lanka and explain how the government help to improve tea cultivation.



- 05) (i) Give 4 minor export crop cultivated in Sri Lanka. (2 Marks)
 (ii) Give 3 reasons for that the government has been taking attention to promote the cultivation of minor crops.. (2 Marks)
 (iii) Explain the benefit of cultivation of minor crops. (5 Marks)
 06) (i) Name three types of Rocks that can be classified based on their origin? (2 Marks)
 (ii) Give 5 Factors that contribute to the formation of soil? (2 Marks)
 (iii) (a) Give 2 problems due to the use of soil? (2 Marks)
 (b) List 2 steps which can be taken to conserve soil? (2 Marks)
 07) (i) Mention three densely populated regions can be identified in the world? (2 Marks)
 (ii) Mention 3 Factors that contribute towards the increasing of population for one the above mention region. (2 Marks)
 (iii) Give 2 problems arise due to increasing population? (2 Marks)
 08) (i) Give 3 Modern indicator that used to measure Development? (2 Marks)
 (ii) What is Sustainable Development? (2 Marks)
 (iii) Mention 3 Recent development projects in Sri Lanka? (2 Marks)



Grade 11 Geography

North province