



Provincial Department of Education Northern Province



மாகாணக் கல்வித் திணைக்களம் வடக்கு மாகாணம்

Third Term Exam – 2022- (2023)

Grade : 06

Science - I,II

Time:- Two Hours

Name / Index No :

Part- 1

01) Select and underline to the most suitable answer.

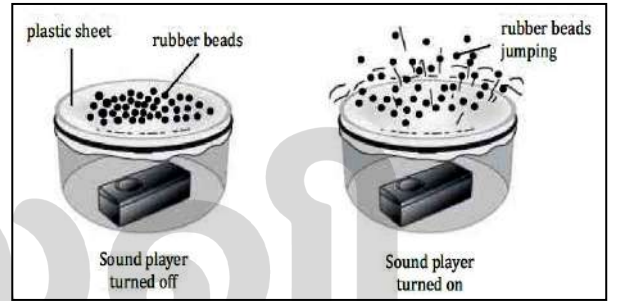
1. Which of the following **is not** a basic characteristic of micro – organisms?

1. Invisible to the naked eye when taken individually
2. All micro organisms cause infectious diseases for animals
3. Microorganisms grow in water
4. All micro Organisms loco mote in various ways

02 Raghav Kept a mini Sound player in each of two similar containers. The picture shows what raghav noticed when he turned on the sound player.

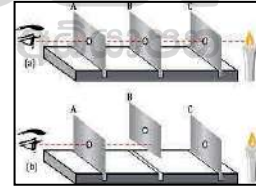
Which of the following question can be answered using the result of raghav's activity?

1. Does sound travel as waves
2. Does sound produce vibration
3. Does sound travel through vacuum
4. Does sound travel faster in solids than in gases



03. What does this investigation show

1. Light travels in a straight line
2. Many light rays make up a beam
3. Light is bright
4. All of the above



04. Select the **incorrect** statement

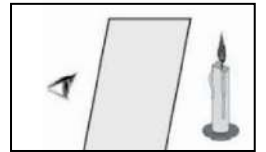
1. The amount of salt that is dissolved in water is known as salinity
2. As the salinity of water increases the mass also increases
3. Water is categorized as fresh water, marine water, and brackish water based on salinity
4. The amount of salt dissolved in fresh water is very high

05. Kathir has sheets made up of different materials. He tries to see a burning candle through each of the four sheets. The table shows kathir's findings

Sheet	Observation
1	Can see the candle flame clearly
2	Can see the Candle flame Hazy
3	Can't see candle flame
4	Can see the candle flame clearly

What can be concluded from Kathir's activity

1. Sheet 2 is a transparent material
2. Sheet 4 is a translucent materials
3. Sheets 2 and 3 are opaque materials
4. Sheets 1 and 4 are transparent materials



6. Choose the correct statement

1. L.P gas is an example for biomass.
2. There is infinite storage of fossil fuel inside the earth.
3. Hydro and wind energy plants are eco-friendly.
4. Waste from a nuclear power plant can be easily disposed off

7. Kamala blows air through a straw into a glass of water. She sees bubbles came out from the straw in the water. The conclusion drawn from this observation is,



1. Air has mass
2. Air occupies space
3. Air can exert pressure
4. Air contains water vapor

8. Which pairs of cars will repel each other?

1. Pair 3 Only
2. Pair 4 Only
3. Both Pair 1 and Pair 3
4. Both Pair 2 and Pair 4

1		
2		
3		
4		

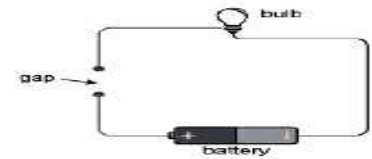
9. Which Colour absorbs more heat?

1. Silver
2. Black
3. White
4. Red

10. Niroja designed an electric circuit as shown. She filled the gap in the circuit with four different objects once at a time.

Choose a good conductor from the following materials,

1. Pencil Lead
2. Plastic
3. Dry Paper
4. Dry Wooden Block



(20 marks)

02). Fill the blanks by using given words

Gas , energy , salt , Bacteria , Petrol

1. Sea is a source of
2. does not has a specific shape or a definite volume
3. can be used as a fuel to run vehicles
4. is a type of micro – organism used in producing curd
5. Things that does not occupy a space and without a mass is called

(10 marks)

03) Put tick (✓) if these statements are correct , and if these are wrong , put a cross (×) within the brackets

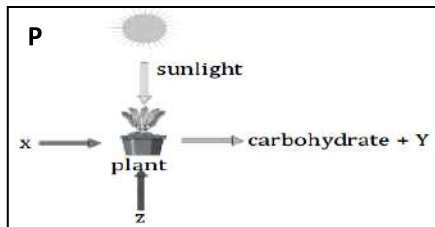
1. Optic fiber technology is used in different decorations ()
2. Among the energy source coal is a biomass ()
3. Water helps to absorb mineral salts to the plant ()
4. Sound is a kind of energy ()
5. Electric current can flow through metals ()

(10 marks)

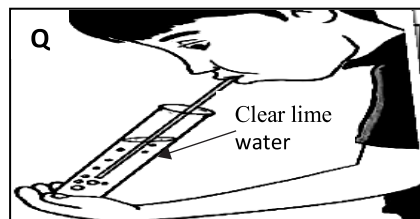
Part 2

Answer four Questions only

01. A. Two situations where Grade 6 students studied the characteristics of organisms are given below.



Food production in plants



Identifying the gas in exhaled air

1. In P,
 1. Identify the substances X and Z which are absorbed?
 2. Identify Y which is released?
 3. Name the food production process mentioned in P?

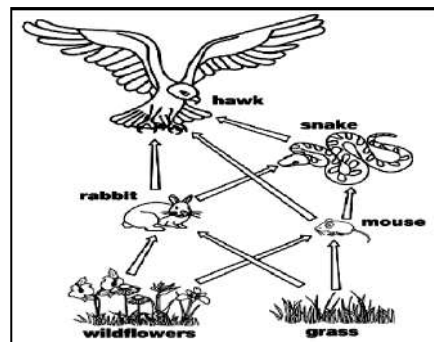
2. In Q,

1. What is the colour of the pure lime water?
2. What is the observation here?
3. What is your conclusion?

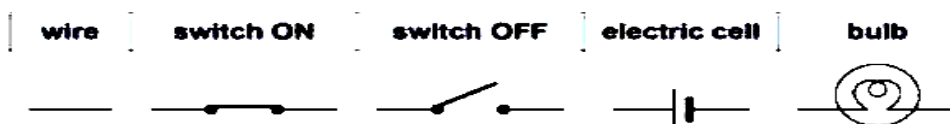
B. Food related relationship among the organisms is given.

1. Name the given relationship?
2. Name the living things that are producers.
3. Name the living things that are consumers
4. Write a food chain with three links from the given relationship.
5. Explain what could happen to the community if all the Rabbits suddenly died.

(15 marks)



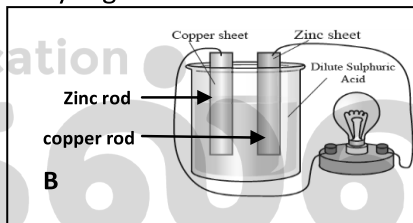
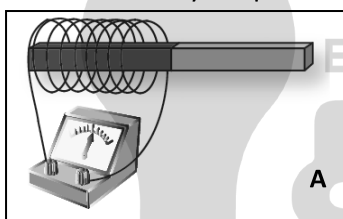
02. A. The symbols for different components of an electric circuit are shown below



Draw an electric circuit using the above symbols that satisfy the following conditions

- ☐ An electric cell
- ☐ Switch is turned off
- ☐ Two electric bulbs (both glow brightly)

B. Two different ways of producing electricity is given.

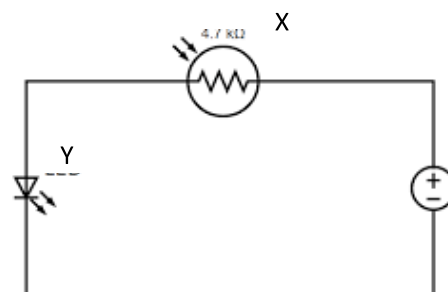


1. In A, How the electricity is produced?
2. State one observation related to the above activity.
3. Write an equipment where the same principle is used to produce electricity in day to day life.
4. Give 2 observation in B.
5. A Student says that In B, it would be better to replace the light bulb with a galvanometer.
 - I. is this statement true or false ?
 - II. Give reasons for your answer.

C. The Following electricity related activity was made up by a group of students.

1. Name the device X, Y
2. When the switch turned on the "Y" flashed slightly. At that time device "X" is exposed to a torch light. What is the observation? Give reason.
3. When the device "X" is closed with black paper. What is the Observation? Give reason.

(15 Marks)



03. A. Leela had a glass container with butter cubes in it. She could not remove the metal lid as it was too tight. She placed the container in a tumbler of hot water. After 15 minutes she was able to remove the lid.

Explain how the hot water helps to remove the lid.



B. Wet clothes are put on a washing line to dry. The water in the clothes turns into water vapor in the air as the clothes dry.

1). Name the following changes.

I. water turns into water vapor

II. Rain Forms from atmospheric water vapor

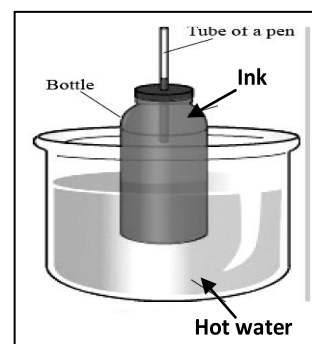
2) "The clothes dry much faster on a sunny day". Explain.

C. The experimental setup to study one of the effect of heat is shown.

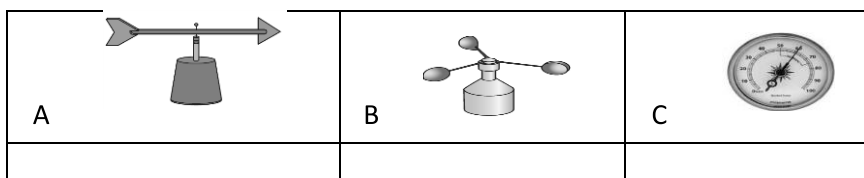
a. What is your observation ?

b. What is the reason for this observation?

c. which effect of heat is being tested by this experiment ? **(15 Marks)**



04. A. 1. Name the following weather instruments.



B. Following table displays the rain fall of a city for a period of time .

1. Which month has the highest rain fall?

2. Which month has the least rain fall?

3. What is the difference between the highest and lowest rainfall recorded?

4. What are the months that can be considered as rainy season?

5. Name the equipment that used to measure the rainfall .

Month	Rainfall (mm)
January	40
February	10
March	80
April	90
May	200
June	185
July	200

C. 1. What is the difference between weather and climate

2. Name the natural disaster occurred due to pressure depression created and the air around that place is blown at a very high speed towards the pressure depression

3. Name the disaster situation which happened due to heavy rain fall and give one harmful effect of it

4. Name an equipment used to measure humidity.

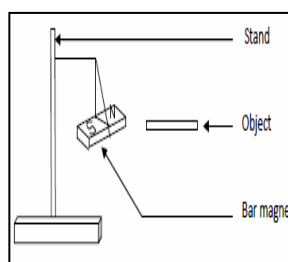
(15 Marks)

05. A. 1. Following diagram explains the behavior of magnet. If the Object has replaced with a nail , pencil and another bar magnet , then write the observation for each.

2. When an unmarked bar magnet is brought towards the north pole a freely hanged magnet, it was repelled . Give reason.

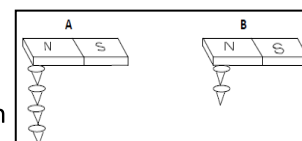
3. To make the magnets attract to each other, Which pole of the magnet should be brought closer to above hanging magnet ?

4. . Name two equipment which have magnets.



Object	Observation
Nail	
pencil	
Bar magnet	

B. Following activity is performed to observe the strength of a magnet. These magnets are bearing the maximum number of nails. What is the observation that you can arrived at.



C. There are some small iron balls in the given plastic bottle. A powerful magnet is attached to the top of the lid.

1. What will be the observation after shaking the bottle vertically .

2. Mention the reason for the above observation.

(15 Marks)

