



## Provincial Department – Northern Province

### Diagnostic Test – 2021

Grade - 8

Science

Time - 2 hours

#### Part I

Select most suitable answer for the following questions.

- 1) Which type of micro-organism is used in bakeries for rising dough?  
1. bacteria      2. fungus      3. virus      4. amoeba
- 2) A disease that is not spreaded by virus ?  
1. AIDs      2. small pox      3. plague      4. rabies
- 3) An animal group which having many number of species is,  
1. Aves      2. Arthropoda      3. Mollusca      4. Mammalia
- 4) Which one is a soft bodied animal in the followings ?  
1. snail      2. cockroach      3. turtle      4. coral
- 5) An animal which having no stream lined body,  
1. shark      2. crane      3. penguin      4. tortoise
- 6) In which plant, leaves are arranged in whirl?  
1. Earlilaippalai      2. guava      3. Annona      4. Vattakkanni
- 7) Which plant is an example for the climbers having weak stem ?  
1. tumeric      2. maramanjai      3. kally      4. vallarai
- 8) A plant, whiuch is unable to produce new plant by root ,  
1. curry leave      2. bread fruit      3. villvam      4. manioc
- 9) Select the group of matters ?  
1. air, water, light      3. water, heat, brick  
2. electricity, brick , paint      4. brick, paint, air
- 10) A non metal which conducting electricity is,  
1. Iodine      2. Sulphur      3. Carbon      4. Phosphorus

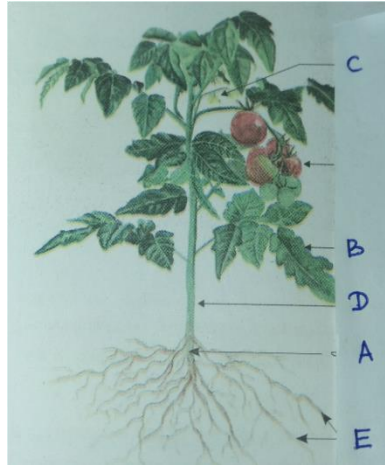
- 11) The boiling temperature of pure water is,  
1. 0°C                      2. 30°C                      3. 100°C                      4. 30-100°C
- 12) The International unit for measuring frequency is,  
1. s                      2. Hz                      3. J                      4. m
- 13) Which is the audible range of human ear ?  
1. 20Hz – 2000 Hz                      3. 20 Hz – 20,000 Hz  
2. greater than 20 Hz                      4. less than 20,000 Hz
- 14) A musical instrument, which produces sound by vibration of air column is,  
1. flute                      2. guitar                      3. thabela                      4. veena
- 15) In which instance , permanent magnet is not used ?  
1. loudspeaker    2. electric motor    3. needle of compass    4. thermometer
- 16) When the amount of resistance of a conductor increases, the amount of current flowing through the conductor will  
1. decrease    2. increase    3. not changed    4. increase and decrease
- 17) The amount of potential difference for a normal car battery is?  
1. 3 V    2. 12 V    3. 1.5 V    4. 9 V
- 18) How is called the process, that a solid becomes gaseous state without changing into liquid state ?  
1. sublimation    2. evaporation    3. melting    4. boiling
- 19) In which zone of a Bunsen flame, complete combustion takes place?  
1. dark zone                      3. dark blue zone  
2. light blue zone                      4. Invisible zone
- 20) It is not an excretory substance, that is disposed from the human body?  
1. urine                      2. sweat                      3. fecal matter                      4. Exhaled air

(20 X 2 = 40 marks)

## Part II

Answer all questions.

1. Major parts of a plant are shown in the diagram.



1. Name the parts A – E ?
2. How is called the parts B, C and D altogether?
3. Mention a plant that reproduces by leaf ?
4. How is the part A modified in carrot?
5. State an adaptation in Cactus for controlling the transpiration ?

(12 marks )

2. Some objects are exhibited on the laboratory table.

Sulphur , Mercury , talc powder , rubber balloon, carbon rod , Aluminium

1. Which substance is yellow in colour ?
2. What is the metal, that found in liquid state in nature?
3. A substance that shows soft-texture. What is the substance?
4. Which is a non-metal that conducting electricity?
5. Why is Aluminum used in making cooking utensils?

(12 marks )

3. Some figures of musical instruments are given below.



1. How sound is produced ?
2. Write two natural sources of sound ?
3. In which musical instrument, sound is produced by the vibration of air column?
4. Mention an advantage of musical therapy?
5. State an animal that can hear the sound below the frequency 20 Hz?.

(12 marks )

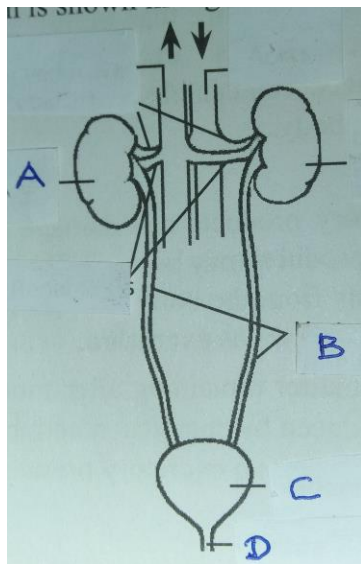
4. A diagram related with the combustion is shown here.

1. Identify the diagram ?.
2. Name the factors a and b ?.
3. Mention two solid fuels ?
4. Rolling on the ground is a suitable method for extinguishing the fire on dress. Indicate whether the factor a or b is removed in the instance ?
5. What are the two elements, which are found in all fuels?



(12 marks )

5. Figure of human urinary system is shown below.



1. Name the parts A,B,C and D ?.
2. Which is the main nitrogenous waste removed from the body through urine ?
3. Write two major parts of human kidney?
4. How is called the disorder that the salts are deposited on the above parts of human kidney?
5. Mention two other excretory organs in human being?

(12 marks )